

City of Troy, Idaho Newsletter

519 South Main Street
PO Box 595
Troy, Idaho 83871
Tel: 208-835-2741
Fax: 208-835-2743
E-mail: troycityhall@tds.net

Presort Standard
US Postage Paid
Troy, Idaho 83871
Permit # 12



ECRWSS

POSTAL CUSTOMER

We're on the web!
www.troyidaho.net

A Great Place To Raise A Family

Page 01



BIG THANK YOU!

The neighbors of Danny Griffis would like to thank him for all of the hard work he has put into plowing their neighborhood.



Student of the Month

Troy Jr/Sr High announces January Students of the Month.

Category: Leadership—Good example for others, getting things started and following through.

Jr High: Molly Swagner and Clint Sandquist

Sr. High: Hailey Malm and Marshall Williams

SNOW REMOVAL

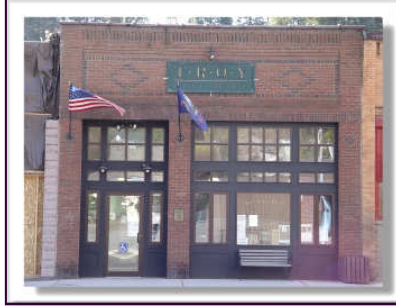
The city maintenance crew and volunteers have been hard at work to keep the snow removed from streets and alleyways. You can assist with their efforts by moving cars frequently and keeping them parked off of the streets. Remember there is no overnight parking allowed on Main Street in the business area. The high volume of snow takes time to remove, your patience and understanding is greatly appreciated.





TROY TALK

Upcoming Community Events!



Business Spotlight:

THE BODY SHOP.

Shelley Bull
Independent Consultant

1042 Orchard Loop Rd., Troy, ID 83871
C: (208) 596-8734 T: (208) 835-5526
a14ubodycare@gmail.com
<http://www.thebodyshopathome.com/web/shelley>

THE BODY SHOP AT HOME



If you are interested in purchasing The Body Shop products contact Shelley Bull at 835-5526 or (208)596-8734.

THANKS LIBRARY!

Tiny Tot's Daycare & Preschool would like to send out a huge thank you to the Troy Community Library, and especially Marge! Tiny Tot's had our first Annual Christmas Program at the Library on 12/17/08. What a great time that was due to Marge and the library space. We would also like to recognize all the parents and family who attended, the children shined that night due to a lot of practice and all your love and support! The children in the "Spot light" were: Ian Hillman, Haley McCully, Connor Wilson, Isabelle Nordin, Levi McCully, Sami Hayes, Morgan McCully, Grace Nordin, and Aubrey Davis!



Troy School News: Basketball Games:

Girls:

- 1/6—Prairie @ Home
- 1/8—@ Clearwater Valley
- 1/13—@ Lewis County
- 1/15—@ Genesee
- 1/17— @ Kootnai
- 1/20—vs. Deary @ Home
- 1/23—@ Culdesac
- 1/26—vs. Timberline @ Home (SR. Night)
- 1/27—@ Kendrick

Boys:

- 1/9—vs. Kootnai @ Home
- 1/10—vs. Lapwai @ Home
- 1/12—vs Potlatch @ Home
- 1/13—@ Prairie
- 1/16—vs. Clearwater Valley @ Home
- 1/17—@ Kootnai
- 1/22—@ Deary
- 1/24—vs. Genesee @ Home
- 1/27—vs. Culdesac @ Home
- 1/29—@ Timberline
- 2/2—vs. Highland @ Home (SR. Night)

TROY SCHOOL

**District
No 287**



102 W Fifth Street
PO Box 280
Troy, Idaho 83871
(208) 835-3791

City Happenings

- **City Council Meetings:**
2nd & 4th Wednesday @
6:30 P.M.
- **City Hall Hours:**
Monday - Friday 8:30 am
- 4:00 pm

Special Notes:

- ◆ Troy is saddened by the loss of another long-time resident, Carol Illi. She will be greatly missed by all that knew her.
- ◆ If you have a tidbit that you would like put in the Troy Talk please submit them to Rhonda at the Troy City Hall. 835-2741 or troycityhall@tds.net

REMEMBER!

Remove large amounts of snow from roofs to avoid damage to your structures.



TROY TALK

DAY CARE OPENINGS

The city has had several inquires about child care available. If you or someone you know is in need of child care the following facilities have openings:

Loretta Griffis, Rhetta's Daycare—835-4201

Roberta Rhoades, Happy Days Daycare —835-3997

Monica Hayes, Tiny Tots Daycare—835-5793



YOUTH IN CRISIS CORNER:

Where Do Young People Drink?

A majority (53.4 percent) of current alcohol users aged 12 to 20 drank at someone else's home the last time they used alcohol, and another 30.3 percent drank in their own home. The percentage of underage alcohol users who had their most recent drink in a car or other vehicle peaked at 10.1 percent at age 16. from The National Survey on Drug Use and Health, August 28, 2008

Parents Are A Major Influence In Their Child's Decision To Drink Alcohol-Help Your Child Make A Decision Not To Drink

By Sharon Fritz

Suggestion #3: Connect With Other Parents. Getting to know other parents can help you keep closer tabs on your child. Friendly relations can make it easier for you to call the parent of a teen who is having a party to be sure that a responsible adult will be present and that alcohol will not be available.

Upcoming Trainings:

Pullman: Graduate Grant Writing Workshop Jan. 30, 31, 2009

THIS IS A TWO DAY EVENT: PLEASE SIGN UP FOR BOTH DAYS

Non-WSU Fee: \$20.00 for both Days Location: CUE 202

Friday, January 30, 2009 3:30 p.m.-6:00 p.m.

Saturday, January 31, 2009 9:00 a.m.-4:00 p.m.

The purpose of the grant writing workshop is to serve as an introduction to participants to the process of competitive grant writing, to current trends in grantmaking, and to various skills and strategies that will enhance their grant writing success. The first session of this workshop will cover searching for and identifying funding opportunities, contacting sponsors and developing a fundable idea. We will also cover research compliance issues and the institutional processing of a proposal. In the second session, we will discuss the typical components and characteristics of a competitive proposal, and organizational strategies. We will provide examples and discuss issues that are relevant to the various groups of people who may attend. The grant writing workshop will also discuss budgeting issues. This introductory workshop is primarily designed for graduate students, but faculty, administrative professionals, staff, community members, and all those with limited grant writing experience are also welcome. Please

contact Sammy Rodriguez at samuel_rodriguez@wsu.edu for additional information.

Registration link: <http://www.ogrd.wsu.edu/workshops.asp#240>

How to Start a Business Boot Camp – Do you want to start a business, but don't know where to begin? Do you know what a business plan is and how important it is to your future business success? Do you have lots of questions & need some answers? Then this concentrated 3 hour "start-up business boot camp" is for you! The topics will include business feasibility, self-employment assessment, initial market research, financial feasibility, regulations and much more. This workshop is being offered on January 12, 2009 from 6 – 9 p.m.; Admin Bldg., Room 12; Cost is only \$10.00!process, and much more. This course is being offered on January 27, 2009 from 6 – 9 p.m.; Admin., Bldg., Room 12. Cost is \$25.00

CONTACT CATHY CORKER @ 792-2465 OR CLCORKER@LCSC.EDU TO REGISTER

"In accordance with Federal law and U.S. Department of Agriculture (USDA) policy, this institution is prohibited from discriminating on the basis of race, color, national origin, sex, age, or disability. (Not all prohibited bases apply to all programs.)

To file a complaint of discrimination, write USDA, Director, Office of Civil Rights, 1400 Independence Avenue SW, Washington DC 20250-9410 or call 1-800-795-3272 (voice) or 202-720-6382 (TDD)."

TROY TALK

Report from Horizons as of December 19, 2008

Our next meeting will be Tuesday, January 20, 2009 at 6:00 pm at Troy City Hall. Our regular meetings are every 3rd Monday of the month, unless this falls on a holiday. In which case, our meeting will then be on the 3rd Tuesday of the month.

At our meeting on December 15, 2008 it was approved for Shishona to find someone to help with the 501(c)3 application. It is hoped that Horizons will have non-profit status by this summer.

There are several grants that are available right now that would be appropriate for us to pursue.

There are several trainings coming up that are open to the community to attend.

We discussed plans for a community garden.

Please contact Shishona Turner @ 835-5049 or shishonathurston@hotmail.com if you would like to be involved with any of these or have any questions.

Available Grants:

USDA Rural Business Enterprise Grant:

The RBS RBEG program provides grants to public agencies, private non-profit corporations or Indian groups for financing and facilitating development of small and emerging private business enterprises outside the boundary of cities with a population of 50,000 or more and its adjacent urbanized area. The funds can be used to fund technical assistance needs, to establish or fund revolving loan programs, or to provide needed infrastructure. Rural Business Enterprise Grants are not available for award directly to private businesses and may only be considered when the project will result in the creation and/or saving of jobs by small and emerging private business enterprises outside of the grant recipient organization.

2009 Project Orange Thumb – <http://projectorangethumb.com>

Launched in 2003, Fiskars' Project Orange Thumb has awarded more than 100 community groups, schools, churches, and other organizations more than \$300,000 in total grants for their garden programs. This year, the program will award 20 grants within the United States and Canada. Each will receive up to \$1,500 in Fiskars garden tools and up to \$800 in gardening-related materials (i.e. green goods). Four grant recipients will also be awarded within Australia. Each of these recipients will receive up to \$1,000 in Fiskars Tools and up to \$1,000 in gardening-related materials. Gardens and/or gardening projects geared toward community involvement, neighborhood beautification, sustainable agriculture, and/or horticultural education are eligible. Community garden groups, as well as schools, youth groups, community centers, camps, clubs, and treatment facilities are all encouraged to apply. Only group applications will be considered; single individuals are not eligible for a Project Orange Thumb grant.

The Big Read - http://foundationcenter.org/pnd/rfp/rfp_item.jhtml?id=230900005

The Big Read is an initiative of the National Endowment for the Arts designed to restore reading to the center of American culture. The NEA presents the Big Read in partnership with the Institute of Museum and Library Services and in cooperation with Arts Midwest. The Big Read brings together partners across the United States to encourage reading for pleasure and enlightenment.

The Big Read is accepting applications from nonprofit organizations to conduct month-long, community-wide reads between September 2009 and June 2010. Organizations selected to participate in the Big Read will each receive a grant ranging from \$2,500 to \$20,000, financial support to attend the orientation meeting, educational and promotional materials, an Organizer's Guide for developing and managing Big Read activities, inclusion of the organization and activities on the Big Read Web site, and the prestige of participating in a highly visible national initiative. Approximately 400 organizations of varying sizes across the country will be selected for this cycle.

Applicant organizations must be a 501(c)3 nonprofit organization, a division of state, local, or tribal government, or a tax-exempt public library. Eligible applicants include such organizations as literary centers, libraries, museums, colleges and universities, art centers, historical societies, arts councils, tribal governments, humanities councils, literary festivals, and arts organizations. Applicant organizations must partner with a library (if the applicant organization itself is not a library), and must select one of the twenty-seven available book titles or one of the three available poetry books.